

TUP500 Printer Specifications

Mechanism - TMP542 & Cutter	
Print Method	Direct Line Thermal Printing
Print Speed	• Up to 220mm per second* • Default speed 180 mm per second
Printable Width	Max. 80mm
Top Margin	11mm (3mm selectable with reverse feed)
Print Resolution	8x8 dots/mm (203 or 406 x 203 dpi)
Paper Feed Speed	Up to 220mm per second
Paper Loading	Semi Automatic with easy "Lift & Tilt" Functionality
Paper Sensors	Black Mark/Paper End/Paper Near End (option)
Paper Specification	Width 45 - 82.5mm Two Color Printing Special Thermal Paper Thickness 0.065 - 0.15mm Roll Diameter Standard: Ø15cm RHU-T500: Ø25.4cm Horizontal;Ø18cm Vertical layout
Autocutter	Full Cut (Guillotine)
Autocutter life	Up to 1 million cuts
Min/Max Cut Length	TUP542: 25mm, TUP592: 75-300mm
Print Head Life	100 km (using recommended paper)
Reliability	60 million lines (MCBF)
Mechanism Dimensions	TMP542: 134.9(W) x 100.6(D) x 102.8(H)mm
Open Frame Dimensions	TUP592: 160(W) x 234.1(D) x 179(H)mm
Without Presenter	TUP542: 160(W) x 185(D) x 179(H) mm
Bar Code	UPC-A, UPC-E, JAN/EAN-8 JAN/EAN-13, ITF, CODE39, CODE93, CODE128, CODABAR (NW-7), PDF417 & QR

*For use with 80/82.5mm width paper with standard 15cm roll diameter

Interface	
Interface Option	USB, Ethernet, Parallel, Serial
Presenter Unit - PR500	
Driving Motor	One DC Motor
Paper Loop	Upper Side Loop
Presenter Function	Document Eject / Document Capture (Timed or Software controllable)
Ejecting Speed	300 mm/s
Paper Thickness	0.065 - 0.15mm
Paper Length	70 to 300mm with Journal Mode for End-Of-Day reporting
Dimensions	135.1(W) x 57(D) x 76.3(H) mm
Life	1 million receipts

Control Board TBD500	
Flash ROM/SRAM	16 Mbit / 4 Mbit (2M x 2)
Logo Store	Enabled
Emulations	Star Line & Page Mode, ESC/POS™
Code Page	40 + 1 blank

TUP500 Open Frame and Mechanism Options	
- USB, Ethernet, Parallel, Serial Interfaces	
- PS60 Power Supply	
- Ø 25 cm Paper Roll Holder (RHU-T500)	
- Large Roll Damper Roller Unit (DRU-T500B)	
- Paper Exit Guide (Snout) - LED lit with Flashing Attraction mode	
- Weight bar (high capacity roll use) - PR5 (included at purchase)	

TUP900 Printer Specification

Mechanism - TMP942 & Cutter	
Print Method	Direct Line Thermal Printing
Print Speed	Up to 150mm per second
Printable Width	Max. 104 mm
Top Margin	15mm (3mm selectable with reverse feed)
Print Resolution	8x8 dots /mm (203 dpi)
Paper Feed Speed	Up to 150mm per second
Paper Loading	Semi Automatic
Paper Sensors	Black Mark / Paper End / Paper Near End (option)
Paper Specification	Width 80-112mm Two Color Printing Special Thermal Paper Thickness 0.065 - 0.15mm Roll Diameter Standard: Ø15cm RHU-T900: Ø 25.4cm Horizontal Ø18cm Vertical layout
Autocutter	Full Cut or Partial Cut Full Cut only with Presenter PR900 & TUP992
Autocutter life	Up to 1 million cuts
Min/Max Cut Length	TUP942: 25mm, TUP992: 75-300mm
Print Head Life	100 km (using recommended paper)
Reliability	37 million lines (MCBF)
Mechanism Dimensions	TMP942:162.5(W) x 94(D) x 50(H) mm
Open Frame Dimensions	TUP992:192(W) x 249.3(D) x 179(H) mm
Without Presenter	TUP942:190.7 (W) x 199.1(D)x 179(H) mm
Bar Code	UPC-A, UPC-E, JAN/EAN-8 JAN/EAN-13, ITF, CODE39, CODE93, CODE128, CODABAR (NW-7), PDF417

Interface	
Interface Option	USB, Ethernet, Parallel, Serial
Presenter Unit - PR900	
Driving Motor	One DC Motor
Paper Loop	Upper Side Loop
Presenter Function	Document Eject / Document Capture (Timed or Software controllable)
Ejecting Speed	300 mm/s
Paper Thickness	0.065 - 0.15mm
Paper Length	70 to 300mm
Dimensions	168.4(W) x 57(D) x 75(H) mm
Life	1 million receipts

Control Board TBD900	
Flash ROM/SRAM	2 x 8 Mbit flash ROM / 4 Mbit Static RAM
Logo Store	Enable
Emulations	Star Line & Page Mode, ESC/POS™
Code Page	40 + 1 blank

TUP900 Open Frame and Mechanism Options	
- USB, Ethernet, Parallel, Serial Interfaces	
- PS60 Power Supply	
- Ø 25 cm Paper Roll Holder (RHU-T900)	
- Large Roll Damper Roller Unit (DRU-T900)	

TUP500/900 Series

Complete Kiosk Printing Solutions available in Modular or Open Frame formats



STAR MICRONICS SOUTHEAST ASIA
399 Interchange 21 Building, Unit 2105, 21st Floor,
Sukhumvit Road, Klongtoey-Nua, Wattana, Bangkok 10110 Thailand.
Tel:+66(0)2-258-4631-2 Fax:+66(0)2-258-4633
URL:http://www.starmicronics.co.th/
Facebook: www.facebook.com/StarmicronicSoutheastAsia
Manufacturer:
STAR MICRONICS CO., LTD.



All Specifications are subject to change without notice.

TUP500 Series : The **NEW** High Speed 220mm per second*, compact Kiosk Printing Solution able to print output on media from 45 - 82.5 mm wide and up to 0.15mm thick

TUP900 Series : The industry standard 150mm per second Kiosk Printing Solution able to print output on media from 80 - 112mm wide and up to 0.15mm thick

Star Performance

The new Super fast, versatile TUP500 Series can provide the highest printing speed available today from a modular open frame dedicated kiosk printer at 220mm per second* with a default speed of 180mm per second using the optional Ø25cm paper roll holder, while the TUP900 can also manage in a fast speed of 150mm/s on super-wide paper of up to 112mm.

Star Flexibility

Connectivity

In order to provide the most cost-effective solution, both TUP900 & TUP500 do not include Interface at purchase.

Customer could choose from our low cost interface options: serial, parallel, USB and ethernet.



Ethernet Option

Positioning

The movable control panel and the multi-position adjustable paper near end sensor with 80 cm cabling give tremendous design flexibility, allowing the TUP500 & TUP900 series to fit in diverse kiosk layouts.

Paper Roll Supply

Both the TUP500 & TUP900 series feature generous 15cm diameter paper roll handling as standard. However, with the option RHU-T900 or RHU-T500, 25cm diameter paper roll could be used in landscape mode or 18 cm diameter roll when used in vertical mode.



25cm diameter High Volume Paper Roll Supply option for Vertical or Horizontal use

Adjustable Paper Width

Easily adjustable, self-centering, manual guides for different paper widths.



Star Reliability

For years, Star has built up a reputation for Reliability, and the TUP500 / TUP900 are no exception – with a MCBF of 60 million lines and 37 million lines respectively, and a durable AutoCutter equipped to cut receipts up to 1 million times.

Star Support

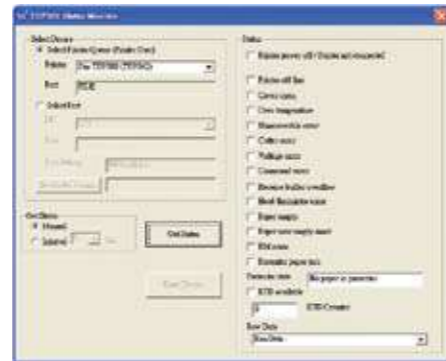


Compatibility with most major operating system

Same as other Star printers, TUP500 & TUP900 come with a quality suite of device drivers for easy integration into the majority of today's operating system: Windows™, Linux™, Mac™ and POS.Net™ etc.

The new TUP500 mirrors many of the features found in other models' Advanced Configuration Utility from simple Graphics management to Ethernet and Memory Switch set-up as well as Auto-Text reverse mode for vertical printer use.

The new TUP500 also features a simple, easy-to-use Status Monitor Tool (below), ideal for system integrators, software houses and users who want more control over their printing devices.



Printer Models

TUP592 & TUP992

Open frame printer solution with moveable control panel and paper near end sensors via extended cables

TUP542 & TUP942

Non presenter version

TMP542 & TMP942

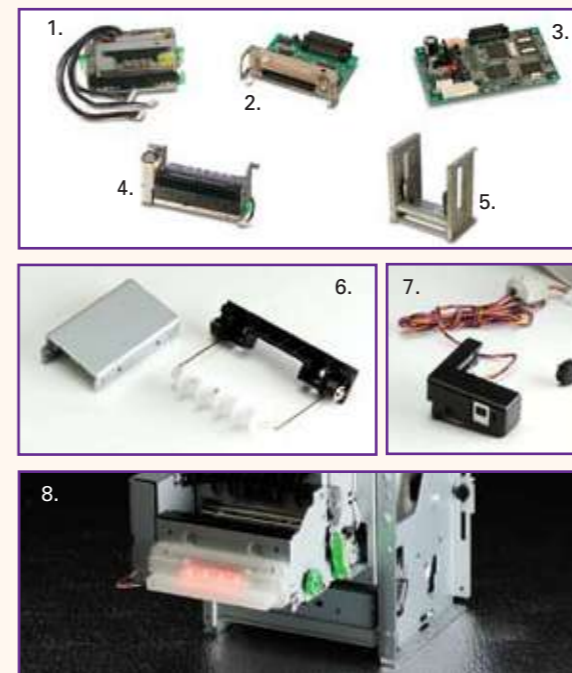
Mechanism only, with different components available to increase the design flexibility

Typical Applications

- Versatile Kiosk Output from 45 to 112mm wide media with mono or two colour 203 dpi graphics
- Information Terminal (A4 to A6 Auto reduction)
- Lottery
- Self-service Flight boarding / Fast Food Orders
- Hotel Receipting
- Ticketing – Car Parks, Cinemas, Concerts, Exhibitions, Theaters
- ATM
- Queue Management



Component Options



1. Compact TMP942 or TMP542 printer mechanisms with cutter
2. Choice of Interfaces
3. TBD900 and TBD500 Control boards as well as the relevant Power supply boards
4. PR900 and PR500 slim line presenters with document capture
5. RHU-T900 and RHU-T500 high capacity paper supply units
6. DRU-T900 and DRU-T500B Damper Roller options for use with high capacity paper supply unit
7. NEU-T900 & NEU-T500 Paper Near End sensors with extensive cables for flexible multi-positioning
8. Snout T500 – Paper Exit Guide with flashing LED attraction mode to highlight emerging printed document (only available in TUP500 series)

Paper Loading Design

Easy Load – simply lift and tilt the mechanism forward and insert the paper for automatic paper loading.

